

# Filling station information

## FILLING STATION INFORMATION

### Fuel filler flap location



A small arrow on the fuel gauge indicates which side of the vehicle the fuel filler flap is located.

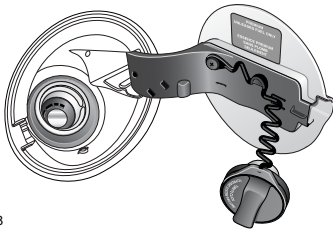
### Fuel filler flap opening



E83217

Pull the flap (as arrowed in the illustration) to open.

### Refuelling



E83218

The filler cap is secured to the vehicle by a strap. For your convenience, a holder is provided, on the fuel filler flap, to hook the strap over while refuelling.

After refuelling, tighten the filler cap until it clicks three times.

### Fuel tank capacity

Litres	Gallons
70	18.5

### Fuel specification

#### CAUTIONS

- ⚠ Do not use of fuels containing more than 10 percent ethanol.
- ⚠ Do not use E85 fuels (85 percent ethanol content). If E85 fuels are used, serious engine and fuel system damage will occur.

The correct fuel specification for your vehicle is shown on the inside of the fuel filler flap.

### Incorrect fuelling

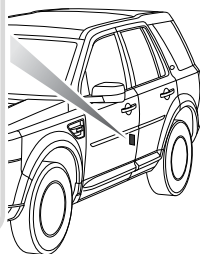
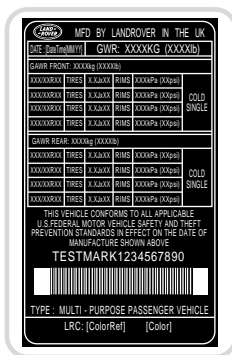
#### CAUTION

- ⚠ If the fuel tank is accidentally filled with the wrong type of fuel, it is essential that the engine is not started and you seek qualified assistance.

# Filling station information

## Tire pressures

### Tire pressure label



E85346

The correct tire pressures are shown on a label attached to the driver's door pillar.

### Engine oil specification

#### Specification

Use only SAE 5W-30 oils conforming to:-  
ACEA A1/B1 + ILSAC GF3, or ILSAC specification GF-4, or ACEA A5/B5.

## LAND ROVER RECOMMENDS



### Engine coolant specification

Top-up to the upper level indicator mark. Use only a 50% mix of water and Texaco XLC antifreeze. See **ENGINE COOLANT CHECK** (page 150).